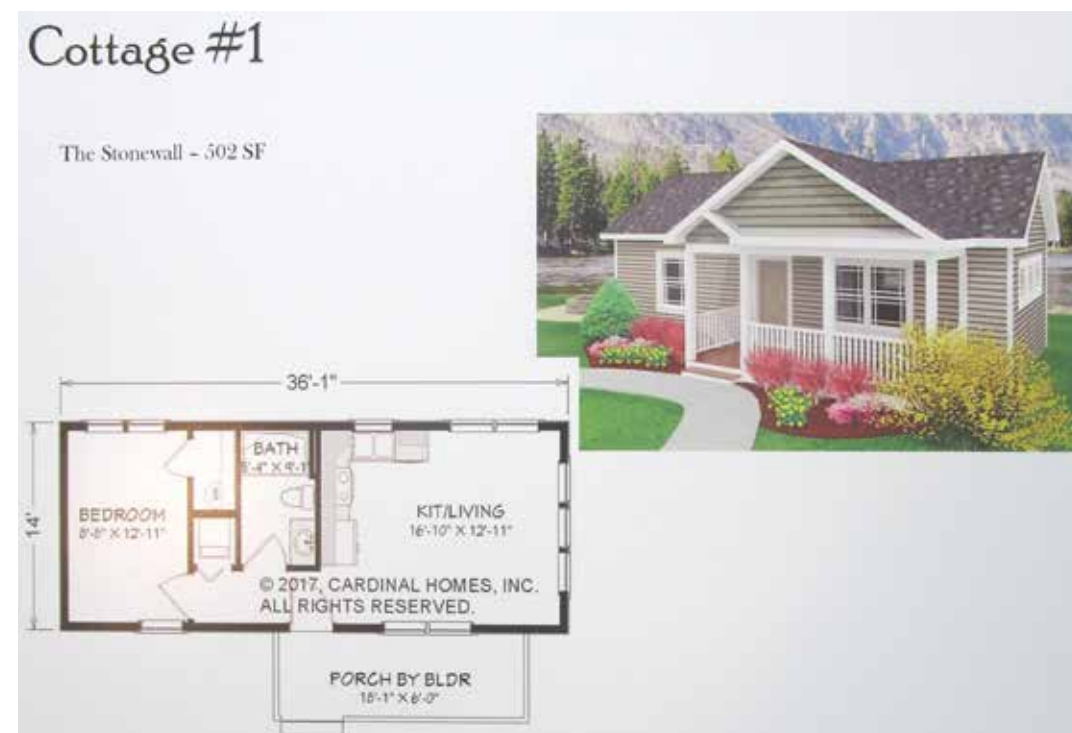
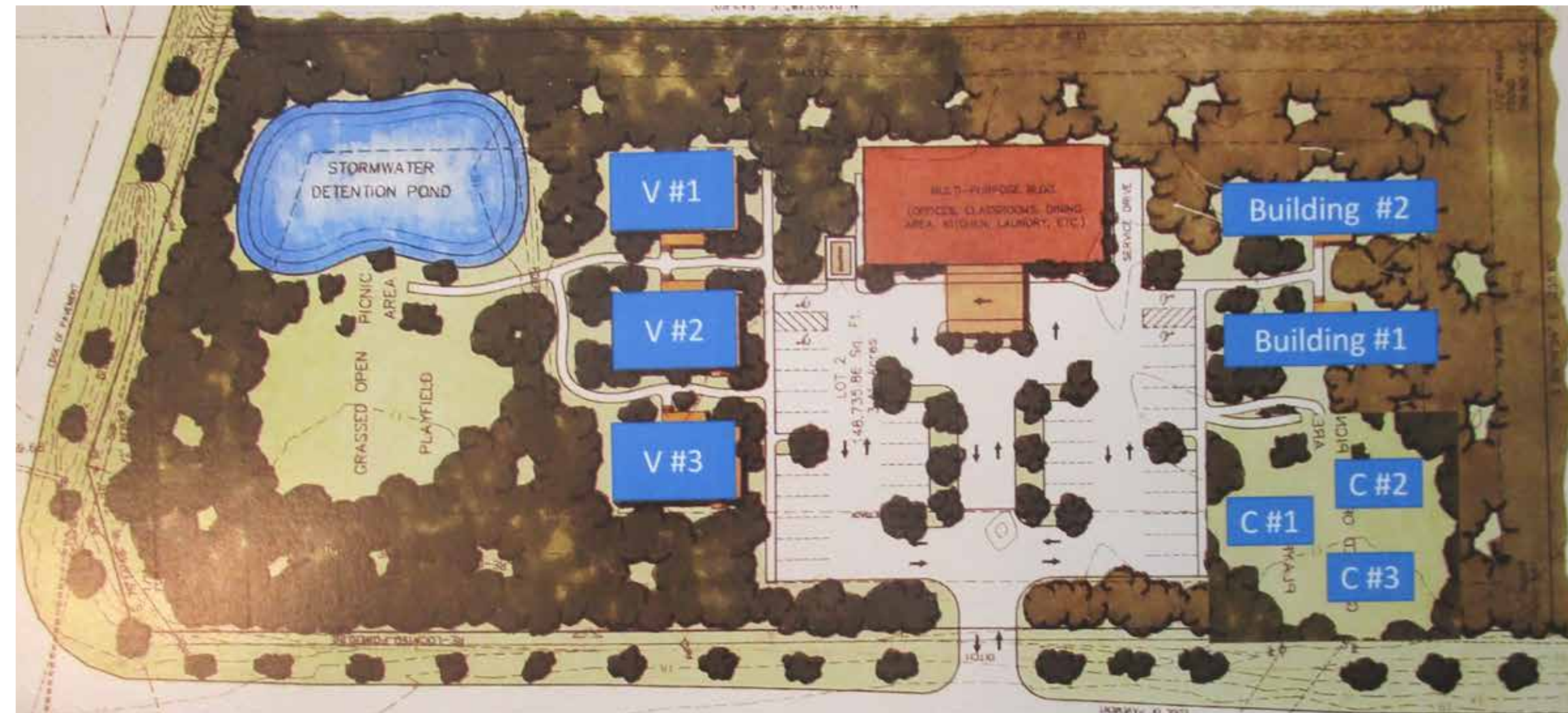


# Circle of Hope Ministries' \$1,000,000 Capital Campaign for Bridge Financing during the Construction Phase of Hope Village Inn Affordable Housing Community for Veterans & Families



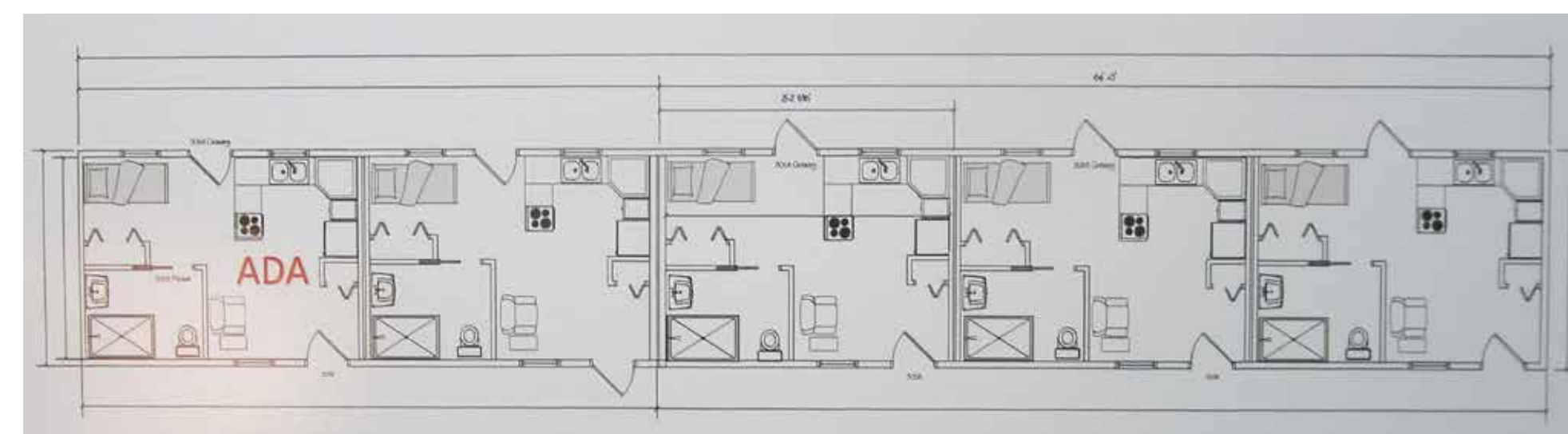
The residential building plans consist of 2 apartment buildings (each with one American with Disabilities Act (ADA) compliant unit; 3 cottages (two with one bedroom and one, ADA compliant with two bedrooms) and 3 villas (one ADA compliant and each with three bedrooms).



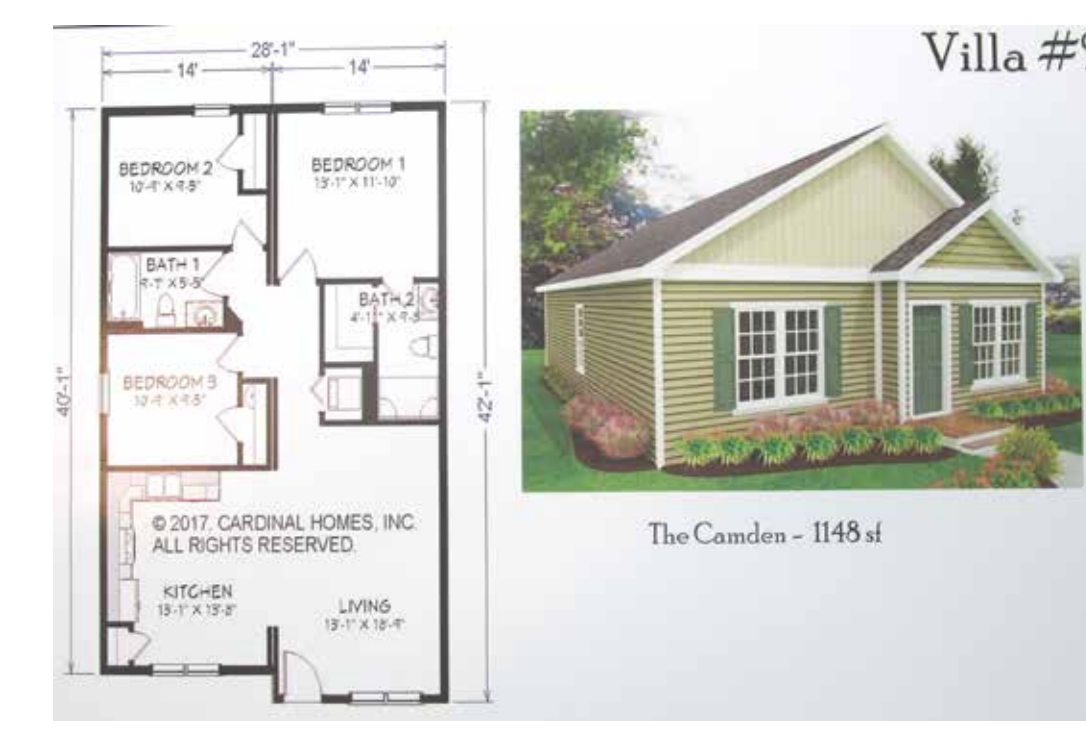
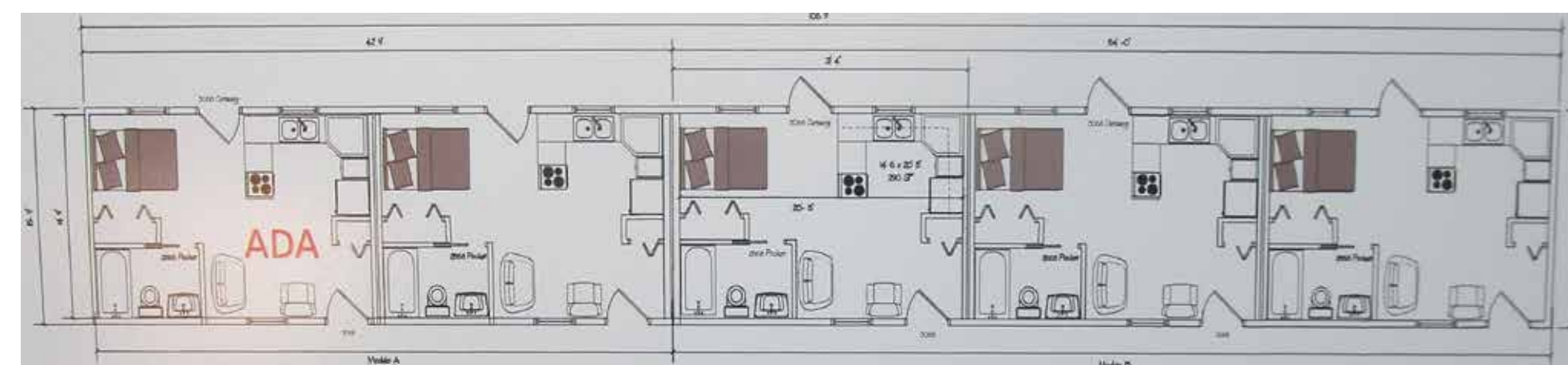
## Multi-Purpose/Community Center



## Building #1



## Building #2



The multipurpose/ community center will consist of two offices, an auditorium, bathrooms, a media room, a meeting breakout room, commercial kitchen, laundry and storage rooms.



201 County Shed Road, Beaufort, SC 29906  
At the intersection of Jennings Road and County Shed Road, approximately .5 miles from Battery Creek High School

The Circle of Hope Ministries, Inc., is a 501(c) (3) IRS tax-exempt, charitable organization and is registered with the SC secretary of State as a public charity. Please contribute to our Capital Campaign to support our veterans who are in need of affordable housing. All donations are tax deductible. Send contributions to: Circle of Ministries, P.O. Box 554, Beaufort, SC 29901

**Phone:** Rev. Dr. John C. Dortch, President/CEO (843) 263-2563.

**Email:** circle of hopenewbeginning@gmail.com

**Website:** www.circleofhopemin.org

To further support our veterans, visit our  
**Veterans 1st Thrift Store**  
612 Robert Smalls Pkwy., Ste. D  
across from Anderson's Funeral Home  
Beaufort, SC 29906  
We are open from 10 am to 3 pm,  
Tuesdays thru Saturdays.  
**Phone:** (843) 263-4218