



# Hope Village Inn

Multipurpose Building  
Beaufort, SC

REV#	DESCRIPTION	DATE

This drawing is the property of Architecture A101, LLC and may not be reproduced or copied without written permission. Reference notes as indicated on drawings. Do not scale drawings. Consult the Architect for necessary clarifications.

NOT FOR CONSTRUCTION

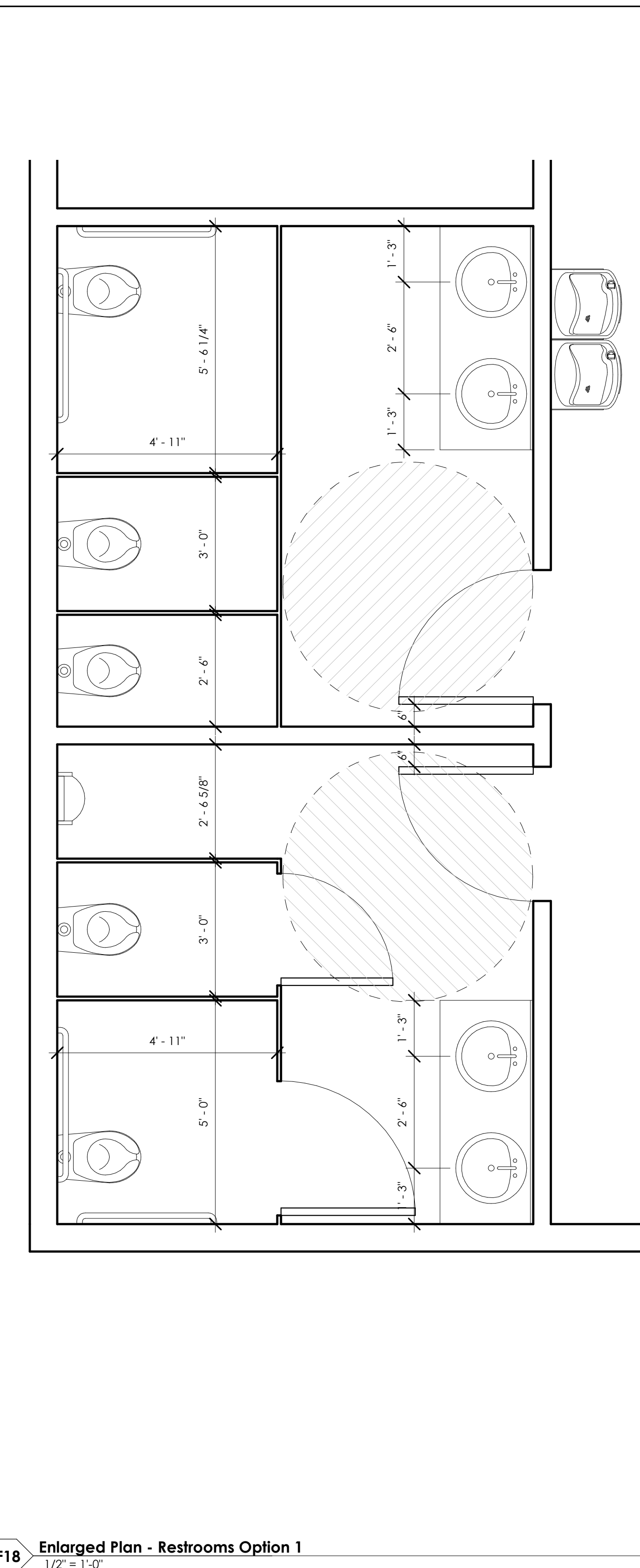
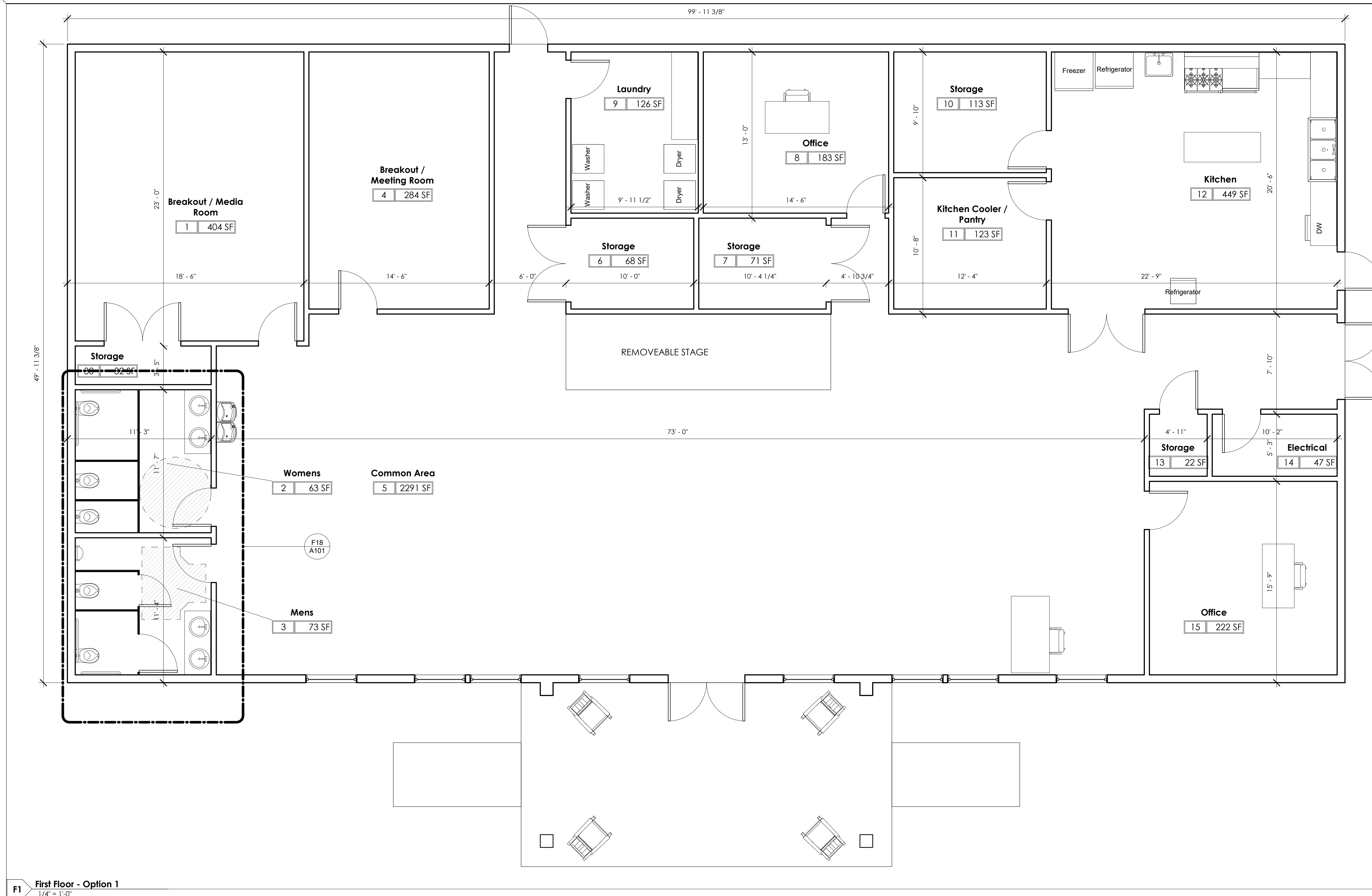


## First Floor Plan Option 1

2019.31
9/16/2019
Drawn By CAD
Checked By SGS

# A101

9/16/2019 3:42:49 PM



F1 First Floor - Option 1  
1/4" = 1'-0"

F18 Enlarged Plan - Restrooms Option 1  
1/2" = 1'-0"

1 2 3 4 5 6 7 8 9 10 11 12 13 14 15 16 17 18 19 20 21 22 23



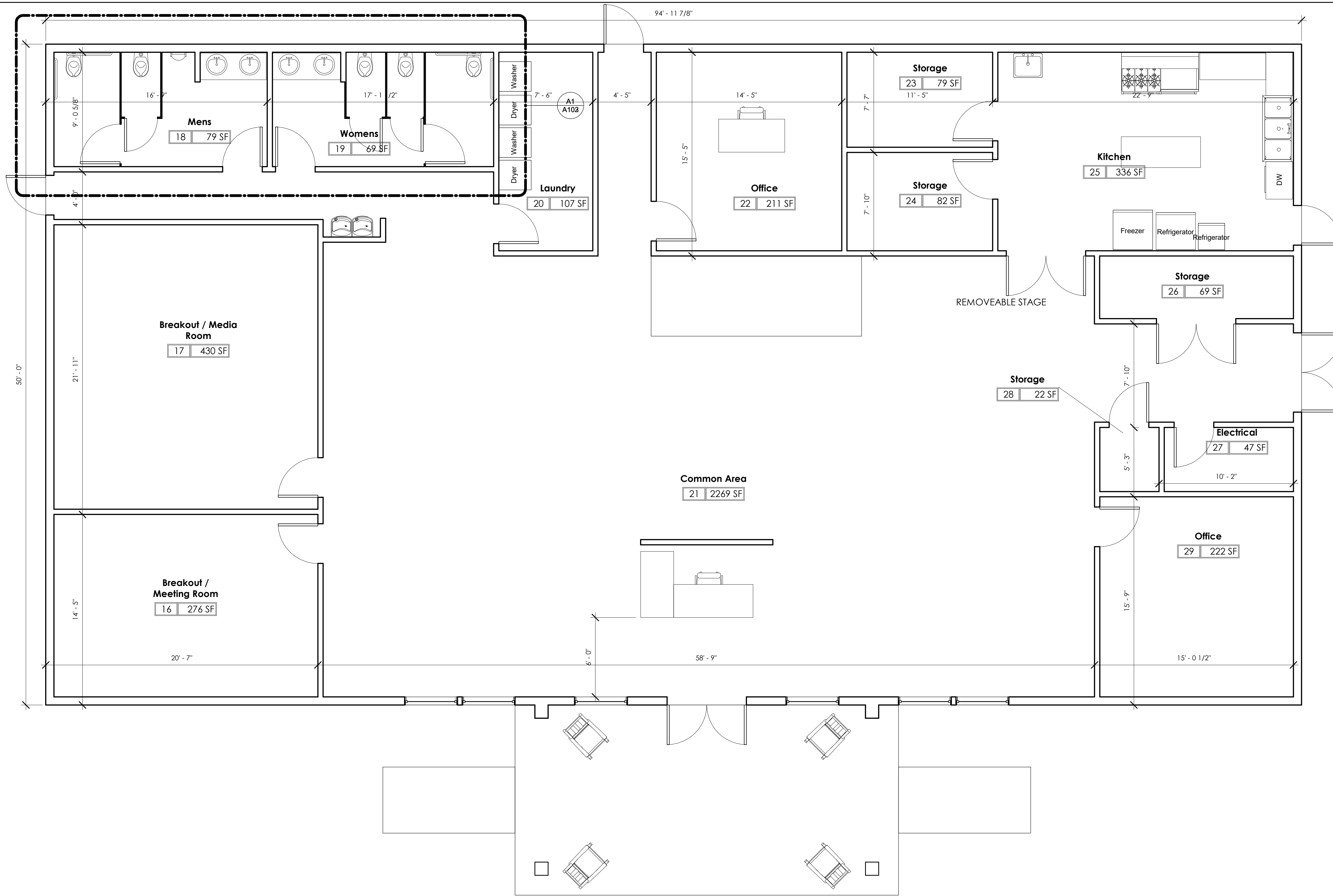
# Hope Village Inn

Multipurpose Building  
Beaufort, SC

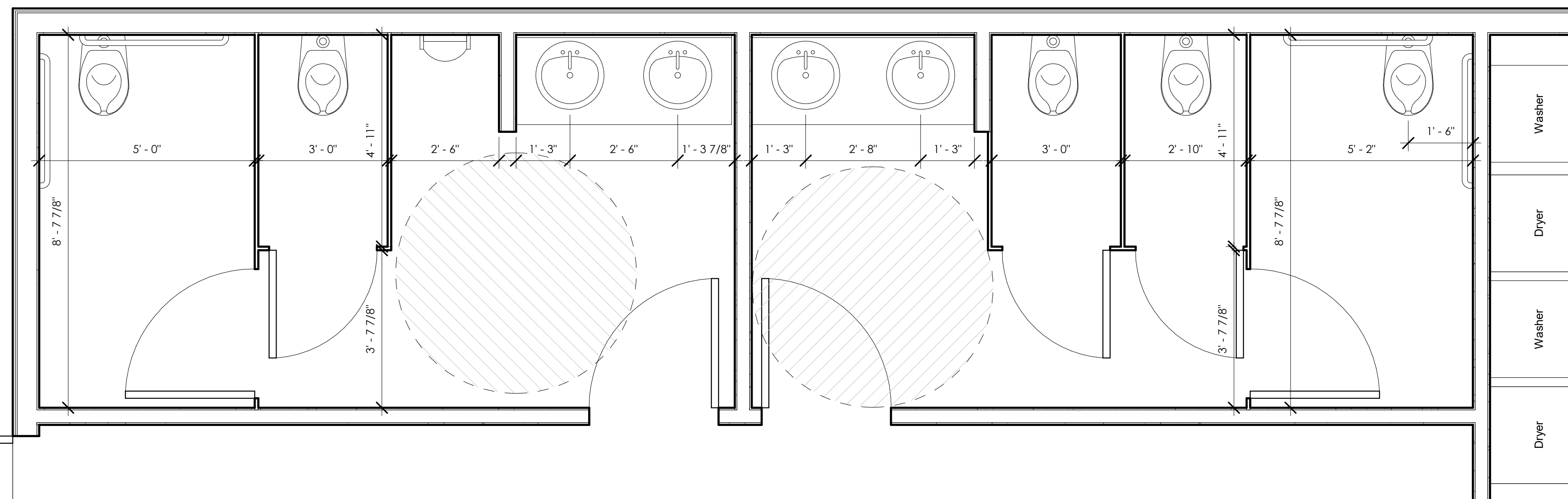
REV#	DESCRIPTION	DATE

This drawing is the property of Architecture 101, LLC and may not be reproduced or copied without written permission. Reference notes as indicated on drawings. Do not scale drawings. Consult the Architect for necessary clarifications.

NOT FOR CONSTRUCTION



F1 First Floor - Option 2  
1/4" = 1'-0"



A1 Enlarged Plan - Restrooms Option 2  
1/2" = 1'-0"



## First Floor Plan Option 2

2019.31
9/16/2019
Drawn By CAD
Checked By SGS

# A102

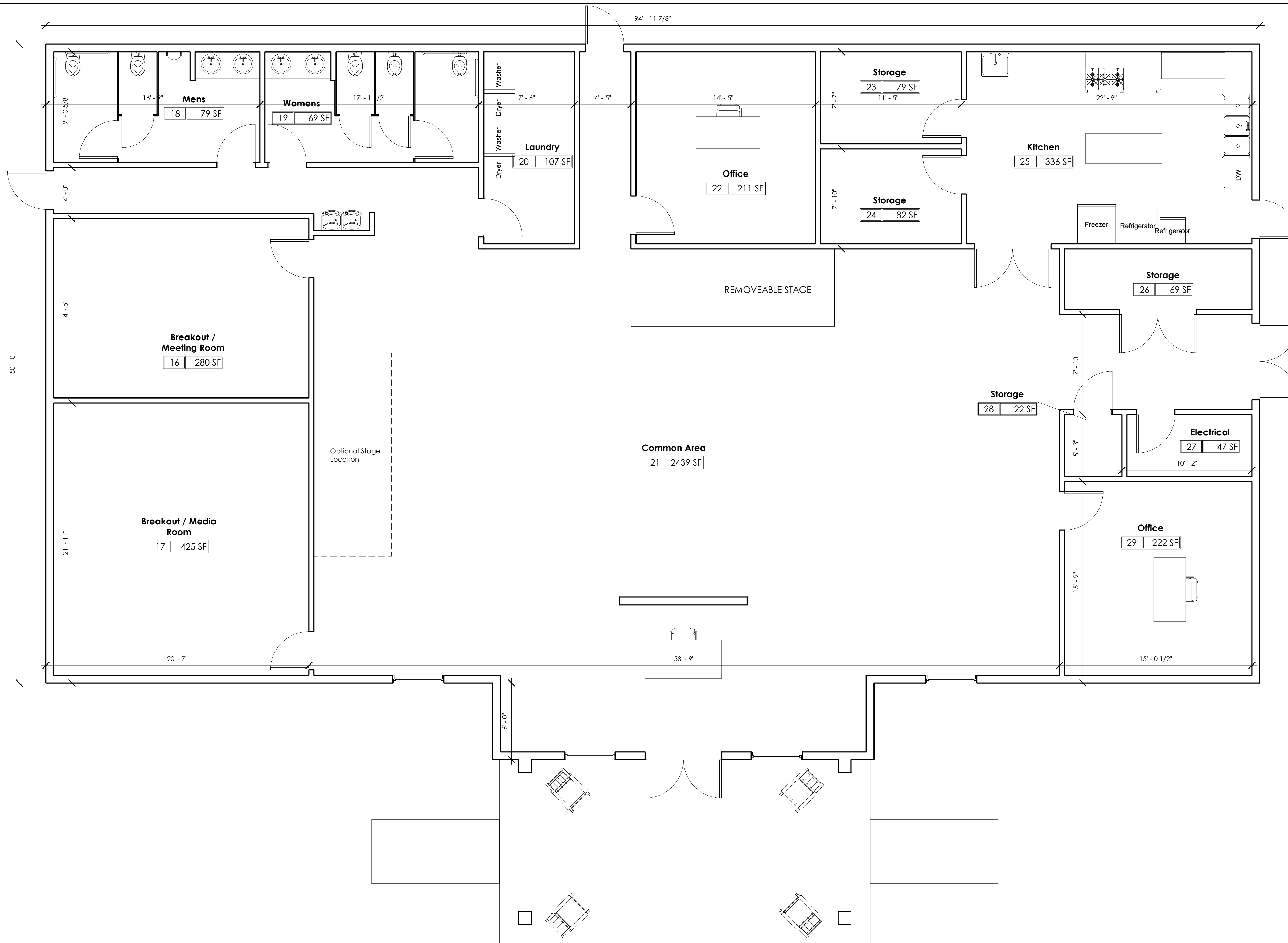


# Hope Village Inn Multipurpose Building Beaufort, SC

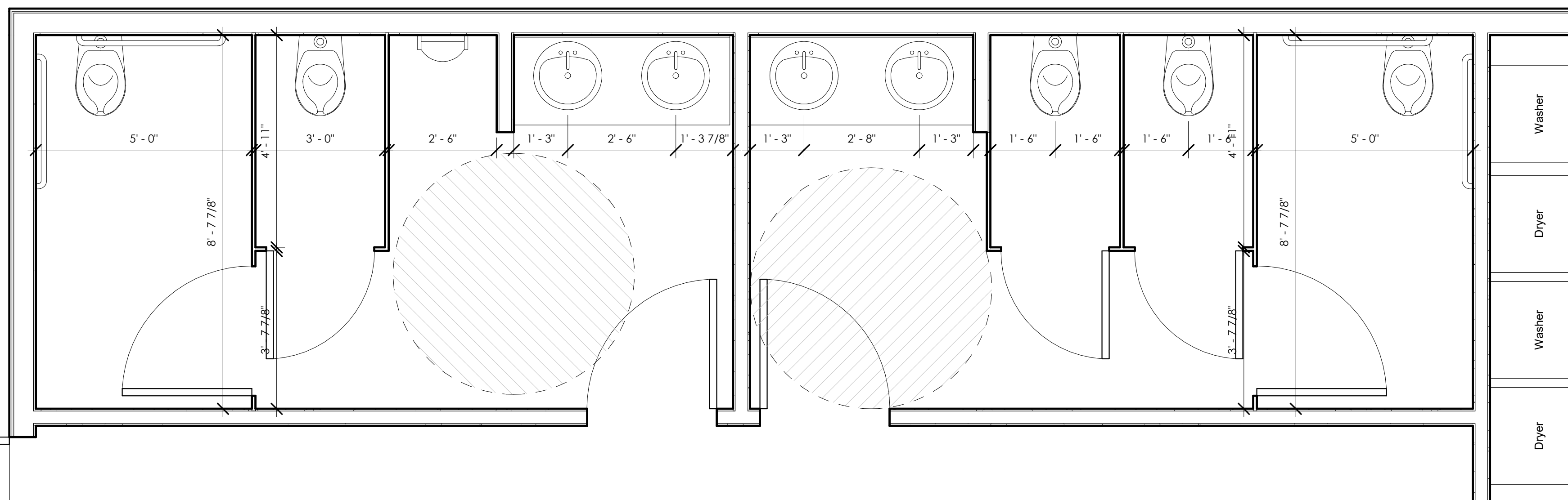
REV#	DESCRIPTION	DATE

This drawing is the property of Architecture 101, LLC and may not be reproduced or copied without written permission. Reference notes as indicated on drawings. Do not scale drawings. Consult the Architect for necessary clarifications.

NOT FOR CONSTRUCTION



F1 First Floor - Option 3  
1/4" = 1'-0"



A1 Enlarged Plan - Restrooms Option 3  
1/2" = 1'-0"



## First Floor Plan Option 3

2019.31
9/16/2019
Drawn By CAD
Checked By SGS

# A103